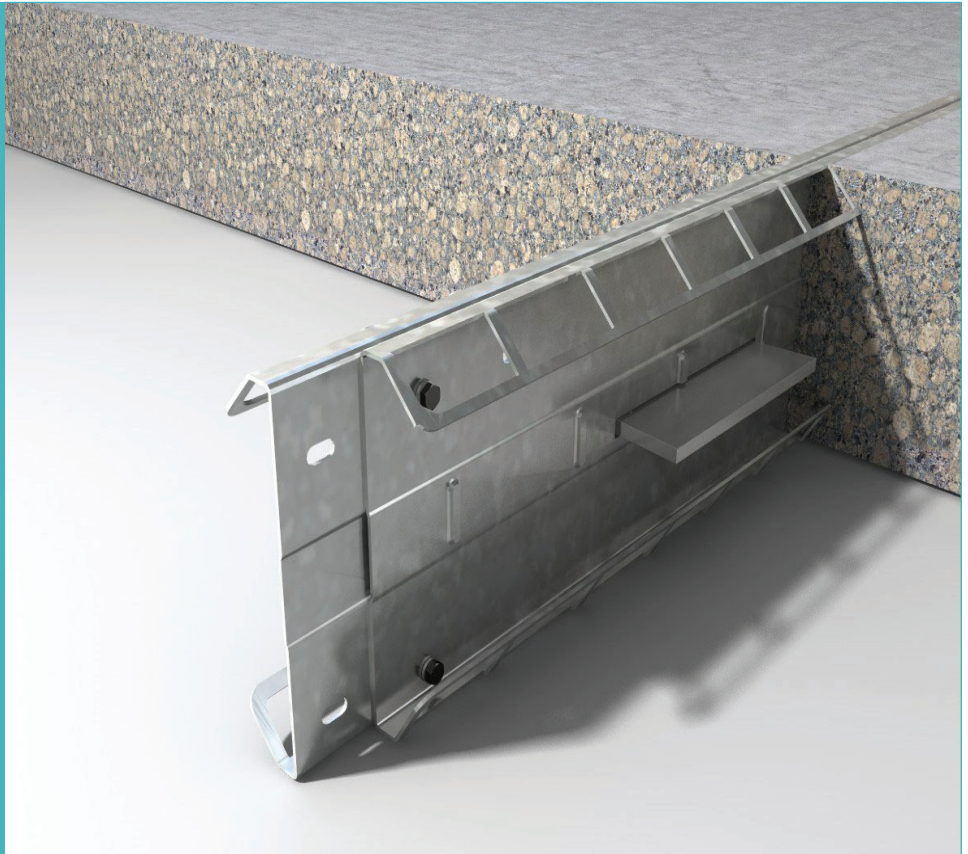


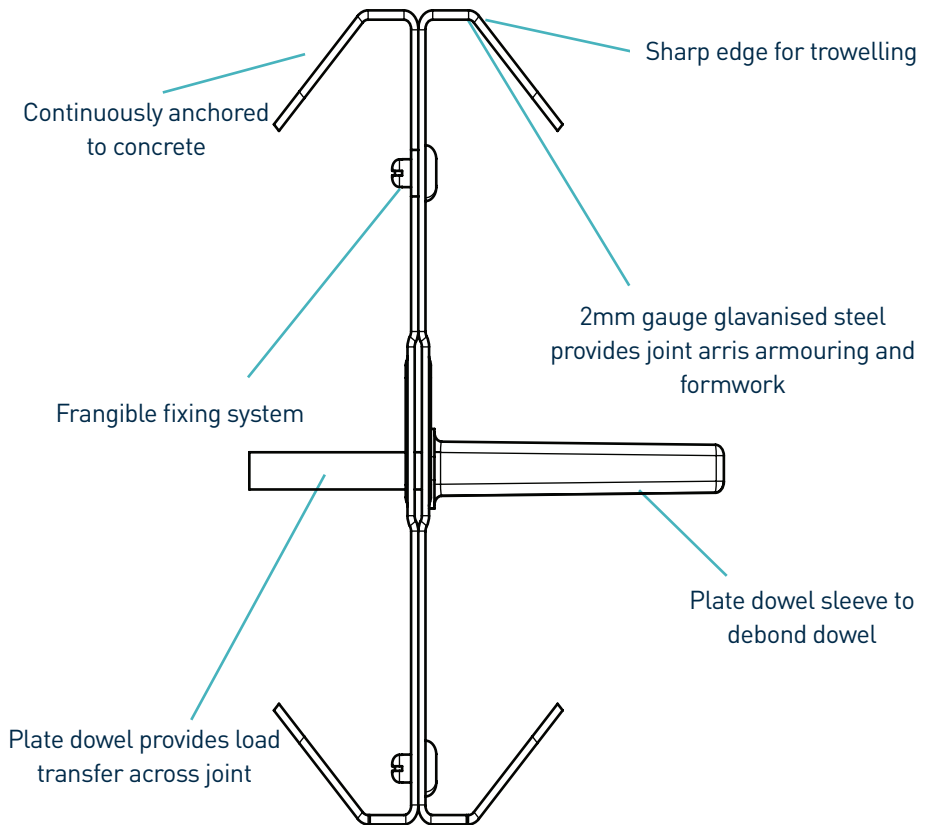
betajoint[®]

Specification Sheet
Issue 4.2
20/04/2015

betajoint[®]



betajoint[®]



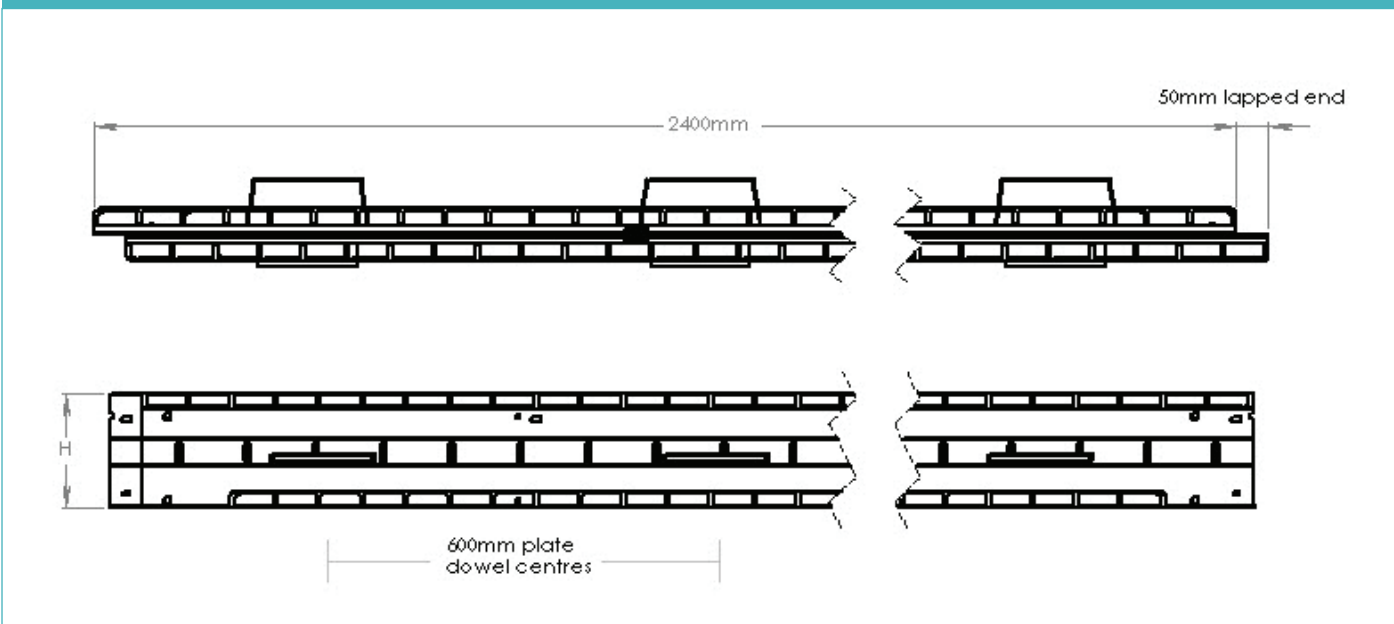
betajoint[®]

Specification Sheet Issue 4.2
20/04/2015

manufacturing tolerances

Length	±2.0mm	Height	±1mm	Straightness	±0.5mm/600mm
---------------	--------	---------------	------	---------------------	--------------

dimensions of BetaJoint[®]



dimensions and weight of betajoint[®]

Nominal Slab Depth (mm)	Joint Height, h (mm)	Dowel Size (mm)	Dowel Centres (mm)	Length (mm)	Single Joint Weight (kg)	Number Per Bundle	Bundle Weight (kg)
150	130	151 x 120 x 8	600	2400	16.0	78	1450
175	150				18.0	65	1320
200	175				19.5	52	1177
225	200				22.0	52	1312

Typical height and length values shown only. Weight values shown are based on BetaJoint[®] including TD8 dowels and are approximate.

materials

Component	Material
Joint arris armouring	BS EN 1030:1999 DC01
Sheet steel formwork	BS EN 1030:1999 DC01
Plate dowel	BS EN 10025-2:2004 S275JRG2 min 410 N/mm ²
Plate dowel sleeve	HDPP

betajoint®

Specification Sheet Issue 4.2
20/04/2015

theoretical calculated ultimate loads at failure of dowel or concrete

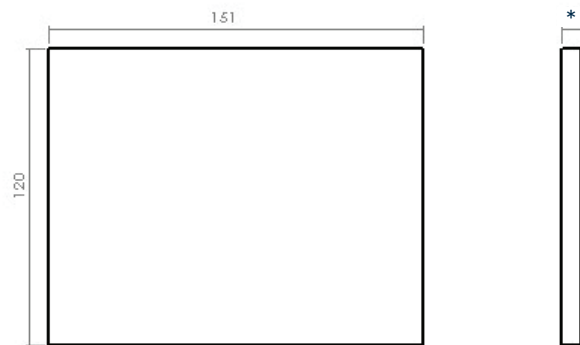
(For typical slabs, 40N/mm² concrete and 20mm joint opening)

Slab Depth (mm)	Dowel Type	Unreinforced Slab		Steel Fibre Reinforced Slab (Re3 = 0.8)	
		Bursting (kN/m)	Bending (kN/m)	Bursting (kN/m)	Bending (kN/m)
150	TD6	50.50	80.83	87.17	80.83
	TD8	50.50	143.50	87.17	143.50
	TD10	50.50	224.34	87.17	224.34
200	TD6	82.00	80.83	141.67	80.83
	TD8	82.00	143.50	141.67	143.50
	TD10	82.00	224.34	141.67	224.34
250	TD6	81.00	80.83	136.50	80.83
	TD8	81.00	143.50	136.50	143.50
	TD10	81.00	224.34	136.50	224.34
300	TD6	87.33	80.83	147.50	80.83
	TD8	87.33	143.50	147.50	143.50
	TD10	87.33	224.34	147.50	224.34
350	TD6	94.00	80.83	160.00	80.83
	TD8	94.00	143.50	160.00	143.50
	TD10	94.00	224.34	160.00	224.34

Ultimate load (kN/m)

This table shows the load at failure in bursting (failure of the concrete) and bending (failure of the dowel) for a joint opening of 20mm - larger joint openings can be accommodated. The ultimate load has been calculated in accordance with TR34 4th Edition. For more detailed analysis please contact Permaban.

compatible dowel systems



Dimensions in mm

*Available in 6, 8, 10mm

DD is not available in the following territories: Mexico, Canada, USA, Australia and New Zealand.



All content found within this datasheet is approximate. Permaban Ltd reserves the right to amend this datasheet at any time. For further details, please contact Permaban Ltd. Permaban Ltd is registered in England & Wales - No. 02815314. BetaJoint® Patent Pending.